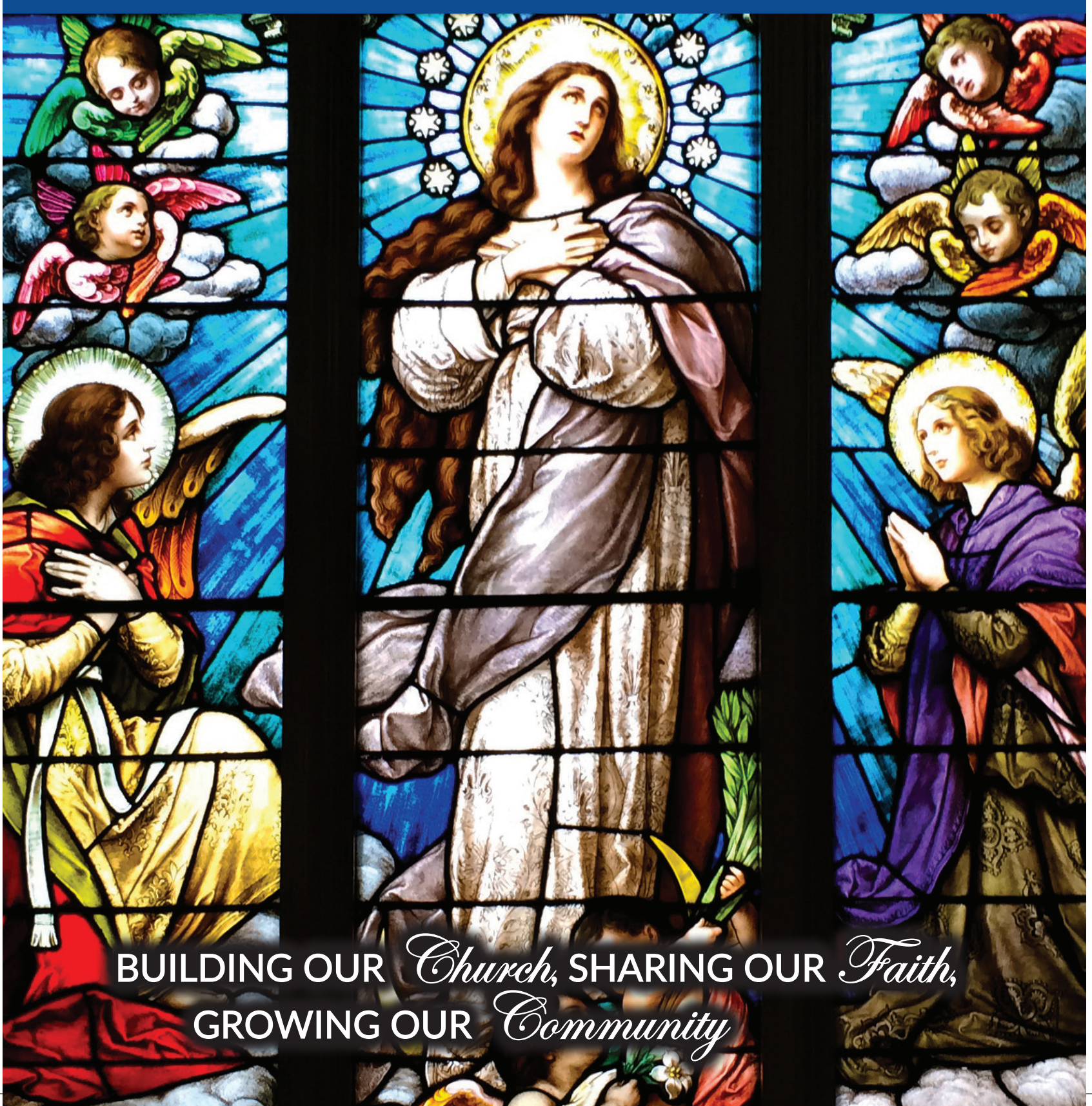




Immaculate Conception

CATHOLIC CHURCH



BUILDING OUR *Church*, SHARING OUR *Faith*,
GROWING OUR *Community*

BUILDING OUR *Church*, SHARING OUR *Faith*, GROWING OUR *Community*

Immaculate Conception is a Church created and built by determined Catholics living the virtues of Faith, Hope, and Love. It was originally constructed and dedicated in 1858 serving the parish for over 100 years, until a new Church and Rectory were built in its place in 1961-1962 with additions and changes over the years. Over 160 years later, Immaculate Conception is still a place where our faith community continues to gather for daily Mass, Sunday Mass and to celebrate Christmas, Easter, and Pentecost; baptisms of infants and new catechumens; marriages of those committing themselves to each other and to God in His Holy Church; funeral Masses for those entering into eternal life; as well as so many sacraments central to the lives of all parishioners.

Our History

Over the decades, Immaculate Conception Church served faithful Catholics remarkably well. However, the growth in church membership, showing an increase of almost 27% just in the last 20 years, resulted in insufficient seating capacity for major liturgical celebrations, and has often been overloaded with chairs in the aisles at regular Sunday Masses. In addition, the current structure was built in the early 60s with several deficiencies relative to the proper celebration of the Sacraments and full, active participation in the Mass, the Source and Summit of the life of the Church.

Over the last two decades, a Church Planning Committee in 1994, and 20 years later a Needs Assessment Committee, have determined that a new and expanded church is needed to enhance the celebration of Mass and the quality of parish life. Early in those discussions the Planning Committee began acquiring contiguous property as it became available to allow for a new school building, a new church, and future expansion of the school. Although the need and hope for the church was forthcoming, plans were put on hold due to a tornado demolishing the remaining old school facilities in 2003. Instead, a new school gym and classroom building was constructed and dedicated in 2004.

In January 2015, following the pay-off of the school debt, the Needs Assessment Committee comprised of 12 parishioners was convened to review the status of the need originally identified 20 years prior.

Several significant deficiencies were identified by the committee, most notably the following:

- Inadequate space and seating capacity for liturgical celebrations and Mass
- Lack of a gathering space before and after Mass
- Insufficient accessibility for elderly and handicapped (ADA)
- Undersized Sacristy
- Inadequate placement and area for the Sacrament of Baptism,
- Deficient music space and a single confessional
- Inconveniently located and inadequate restrooms
- Insufficient meeting and office space, as well as the inadequate structural, mechanical, electrical, and plumbing systems approaching the end of their normal, useful life.



Our Future

The continued growth and a greater awareness and appreciation of the overall picture of all the needs for additional space, enriching the sacred liturgy, bringing together parish offices and programs reinforced that Immaculate Conception must look towards the future. Therefore, the Needs Assessment Committee recommended to the Parish Council “that a new church building be constructed in order to provide the best opportunity to allow our Parish to welcome new members as well as continue to grow spiritually with a strong sense of unity through our current parishioners.” The new church supports and enhances the relationship between the parish and the school as they function together as one entity, participating in the growth in holiness of the Church and ongoing evangelization.

The initial and continued priorities were the impetus of discussion and planning among parish leaders, staff, volunteers, along with professional architects and consultants, culminating in the current building design plans and launching of the Capital Campaign with the motto of *Building our Church, Sharing our Faith, Growing our Community*.

Our focus is the overall and ever-present objective of bringing more people closer to Christ, our Savior—making disciples of those who are not followers of Jesus, and making intentional, missionary disciples of those who already are. We do this with the diocesan vision in mind of Loving Jesus, Serving Jesus, and Sharing Jesus. When asked what kind of church to build, the answer invariably has been, “we want it to look like a Church.” We acknowledge and embrace the meaning of this statement as the innate desire for something of beauty that speaks to the sacred Truth of our Eucharistic Liturgy, the Mass, and to the sacramental and prayer life of all who seek the Way, the Truth, and the Life—Jesus Christ!

A new, larger Church has been designed to serve the Parish for 100+ years with enhancements that are central to our parish spiritual life.

The building style will be a traditional church architecture with some contemporary features.

The church will include 722 seats in the pews of the main body of the church (Nave), plus 204 seats in a large choir loft. A gathering space (Narthex) will allow for the addition of up to 160 folding chairs for large liturgical celebrations, with glass doors opening to the Nave, bringing the total seating capacity to 1,086.

722 Seats - Nave

204 Seats - Choir Loft

160 Seats - Narthex

1086 Seat
Capacity

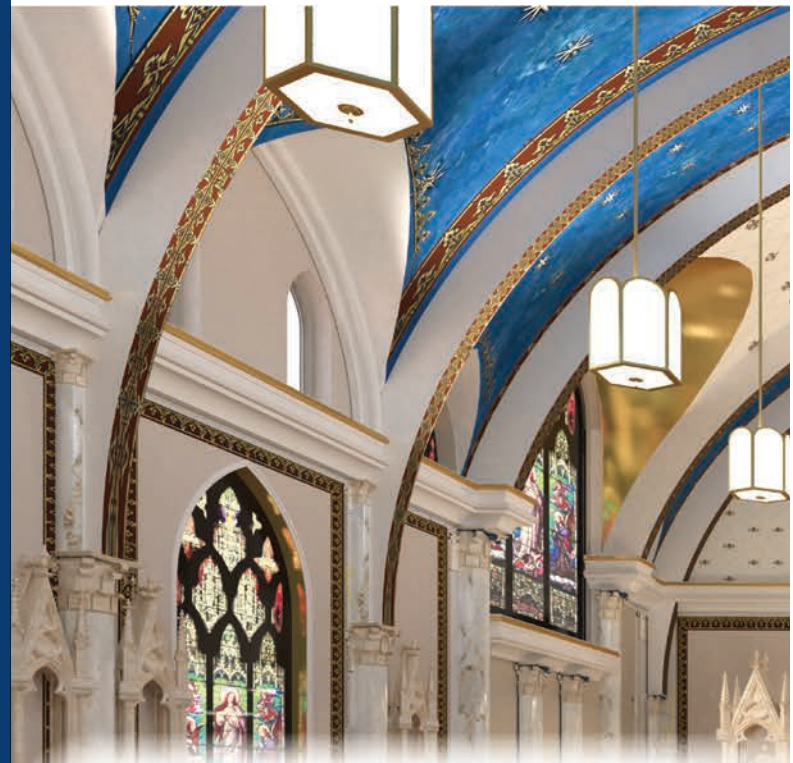
The choir loft will ensure an atmosphere favorable for sacred music, worship, prayer, and celebration of the Mass with conscious participation in the Liturgy through its sung elements.

THE *Mass & Sacraments* OF THE CHURCH

The Mass is the “source and summit of our Catholic Faith.” The beauty of a traditional high altar, religious art, stained glass windows, and statuary will be incorporated throughout the church utilizing refurbished items from the decommissioned church of Visitation/St. Ann in the St. Louis Archdiocese. The sanctuary where the Sacrifice of the Mass occurs with the bread and wine changed into the body and blood of Jesus, Our Lord and Savior, and where the Holy Eucharist is reserved in the tabernacle, will be designed with a focus on the sacred nature of the space. The new church will be set back further from the highway and built with an east/west orientation to allow the People of God to worship with a view toward the rising of the sun in the east, the great symbol of the Resurrection of the Son of God, the Light of the world, to enhance the natural light in the space, and to limit noise interruptions from the highway traffic.

The Sacraments of the Church are central to our faith.

- The baptismal font will be installed in a prominent location that reflects the spiritual journey through the waters of baptism to the altar of sacrifice and Communion in the Holy Eucharist.
- An additional Confessional will be added to ensure that parishioners can receive God’s Divine Mercy and be reconciled with His church.
- A vesting sacristy will be included near the entrance of the Church to better facilitate the beginning of Mass Processional and provide better accessibility.
- An adoration chapel will be built in the basement area immediately below the sanctuary to provide a more intimate space for extended adoration of the Blessed Sacrament.



ALL ARE
Welcome

A central feature will include a large gathering space (Narthex) where parishioners and people will be warmly welcomed. Parishioners and visitors will be greeted as they enter the church and can gather socially after Mass.

The gathering space will provide

- A readily accessible place where parishioners can interact with various ministries such as pro-life, services for the poor, Knights of Columbus, St. Ann’s Sodality, book giveaways, IC School, SRE, RCIA, and others.
- A comfortable and dignified location where processions for weddings, funerals, baptisms, and other liturgical events can be initiated.
- Families with toddlers and babies can care for their little ones while still maintaining visual and audio connection with the liturgy.



Another essential component of the new Church structure is the expansion of parish offices and meeting spaces in the lower level of the Church with direct access from the Church and the parking lot. The pastor, clergy and staff will work in a modern suite of offices that allow for privacy and daily administration without interruption of an active parish and school.

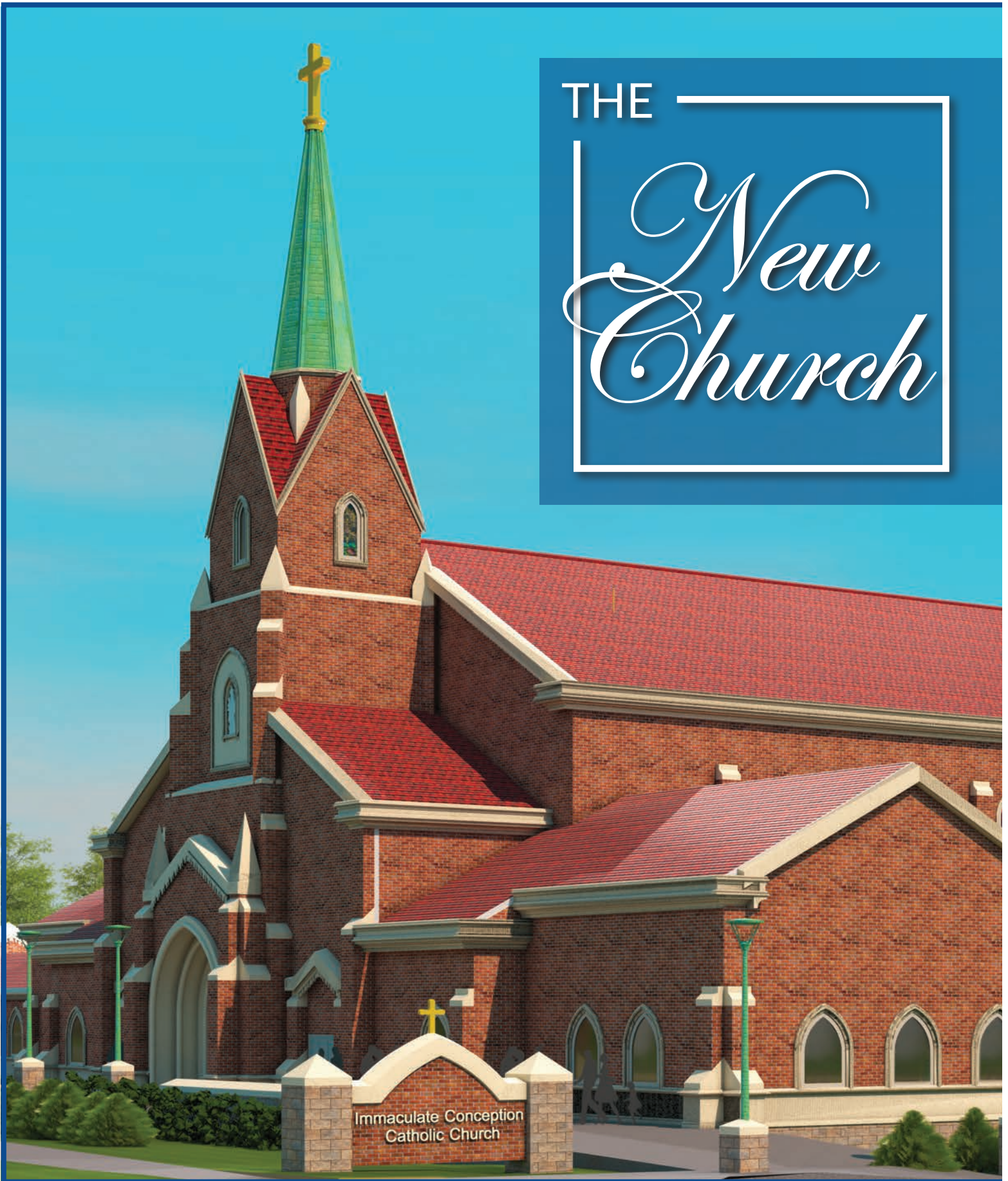
- The multi-purpose meeting spaces will accommodate a variety of parish ministries, RCIA, adult formation classes, bible studies, youth activities, special parish and community programs and meetings. A new quilting room will be included.
- A new fellowship room will be located in our Parish Center to allow for larger gatherings and more flexible use of this great space.

Accommodating all who may want to join our parish, enhancing the spiritual experiences of our Mass and other liturgies, and creating new opportunities for fellowship are critical goals for our parishioners. Attracting people to share the full faith experience of our Catholic Faith at Immaculate Conception has been a constant consideration in the new church design and the development of our Capital Campaign.

- The project will result in easier and safer access for our older parishioners and those with limited mobility.
- Expanded and easily accessible places for meetings and celebrations for our entire community.
- A weather-protected area for drop-off and pick-up, with easy and safe access to the church.
- The new church will allow for ample vehicular circulation, ADA parking, and funeral/wedding circulation.

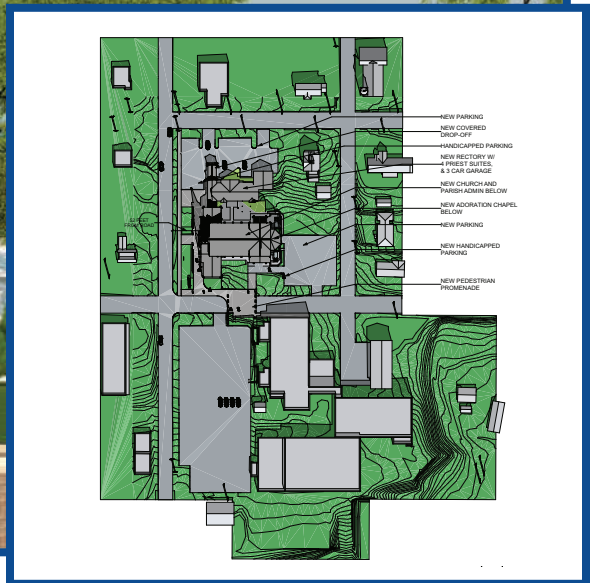
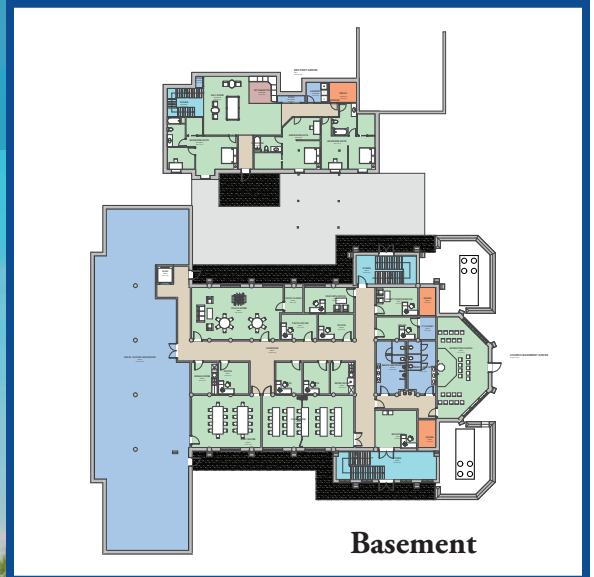
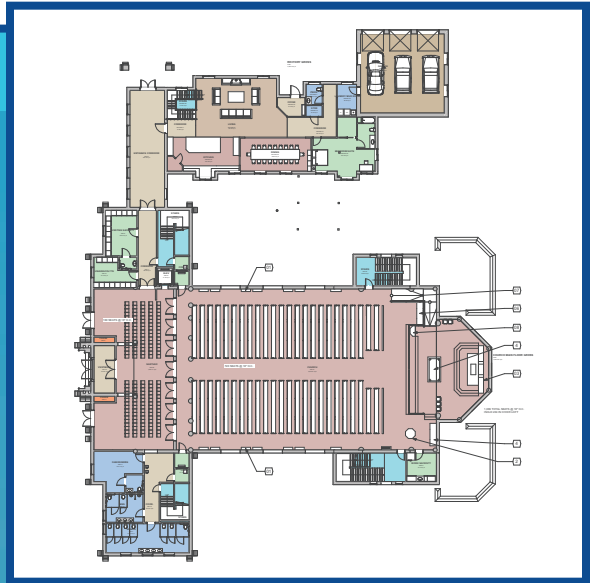
THE

New Church



“A new Church has been the dream of this parish for decades. As the Jackson area grows, Immaculate Conception Parish has to be visible; the Church has to be welcoming, the Church has to be ready to offer services and programs into the next generation. Now is the time to move forward – to build a beautiful Church for the glory of God and Our Lady.”

- Bishop Edward M. Rice



IMMACULATE CONCEPTION CATHOLIC CHURCH

UNITING OUR *Parish* WITH OUR *School*

Growth of our parish both physically and spiritually will provide new opportunities for growth in school enrollment as well. The closure of Jefferson Street that separates the school from the church, and development of a pedestrian corridor in its place, will enhance the safety of our children and enhance the ability to integrate church and school activities as a unified community. These factors add greater attraction of the school to the parish community and the larger Jackson community, providing a boost for our efforts to expand the school enrollment.

A new rectory will be built to accommodate a Pastor and Associate Pastor, as well as rooms for visits by our bishop, missionary priests, retired priests, and/or others. The floor plan will incorporate suite designs typical for rectory layouts with bedroom, bath, and a study, as well as typical living room, dining room, and kitchen spaces. Such suite designs allow for privacy within community living quarters and quiet study areas for development of homilies, private prayer, and spiritual reading.

All components of the entire campus master plan are included and estimated at \$18.6 million. We are incredibly blessed to have \$3 million already in cash, resulting from multiple estate gifts and pledge payments previously made from the 2019/2020 Campaign. At this point we need to raise an additional \$15.6 million in new pledges and donations, including in-kind donations. As we celebrate the early success of the campaign during an incredibly trying time in our world, we must move forward to fulfill our vision of *Building our Church, Sharing our Faith, Growing our Community*. In so doing, we will expand our church and gathering spaces in a way that optimizes the sacredness of our devotion to God and the welcoming nature of our parish family.

“

As we come to Mass, we grow our church, as we grow the church, we grow the school, as we grow the school, we share our faith and grow our community. As Jesus says, “so that they may all be one,” John 17:21a

– Father Randy Tochtrop



CALL OF *Discipleship*

The Church is a community of individuals and families committed to the gospel call of discipleship. As a Catholic community we need to prepare ourselves to engage our existing parishioners honestly and effectively, as well as those who we hope will help our parish and the larger Church, not just endure, but to thrive as we move further into this 21st century. Building our Church, Sharing our Faith, Growing our Community fulfills our belief of welcoming all believers and seekers, engaging our youth, reaching out to those who have left the Church and those who have not discovered us yet, encouraging one another in sharing of ourselves and our resources, and living a Gospel response in all aspects of our lives. We strive for the same passion and foresight as those ancestors who built the original Immaculate Conception Church and to realize a greater fulfillment of the mission as a Catholic community whose spiritual, educational, charitable, and social programs strive to bring all people closer to God.

Total Pledge	Initial Payment	Annual Payment	Semi-Annual Payment	Quarterly Payment	Monthly Payment
\$1,000,000	\$100,000	\$180,000	\$90,000	\$45,000	\$15,000
500,000	50,000	90,000	45,000	22,500	7,500
250,000	25,000	45,000	22,500	11,250	3,750
\$100,000	\$10,000	\$18,000	\$9,000	\$4,500	\$1,500
75,000	7,500	13,500	6,750	3,375	1,125
50,000	5,000	9,000	4,500	2,250	750
\$25,000	\$2,500	\$4,500	\$2,250	\$1,125	\$375
15,000	1,500	2,700	1,350	675	225
10,000	1,000	1,800	900	450	150
\$5,000	\$500	\$900	\$450	\$225	\$75

? **Why not renovate the existing church or build a smaller church?**

Insufficient seating capacity for many Sunday Masses and Holy Day Celebrations has been an on-going issue. One of the priority goals of this project is to build a church to meet the needs of our children and grandchildren, with sufficient capacity to absorb the growth of the parish for up to 100 years.

? **What will the structure and interior of the Church look like?**

The desire we have heard most often from parishioners has been to build a church in a more traditional style. The Mass is the “source and summit of our Catholic Faith.” The beauty of a traditional high altar, religious art, stained glass windows, and statuary will be incorporated throughout the church utilizing current religious pieces as well as refurbished items acquired by Bishop Rice from the decommissioned Church of the Visitation in the St. Louis Archdiocese.

? **Will the church be located further from the highway?**

The church will be positioned further east, approximately 50-55 feet from the road. In addition, Jefferson St. will be closed off and we will use parts of the street for parking and circulation related to parking.

? **Will the new church facility accommodate individuals with disabilities?**

ADA parking spaces will be provided along with a covered drop-off that is tied to an enclosed walkway leading directly into the church. There will be designated seating designed for those relying on walkers, crutches, and/or wheelchairs. An elevator with wheelchair accessibility will provide access to the choir loft and lower level.

? **Will there be a choir loft?**

The choir loft is included to ensure an atmosphere favorable for sacred music, worship, prayer, and celebration of the Mass with conscious participation in the Liturgy through its sung elements.

? **Is there a cry room or area designated away from the primary worship space?**

We encourage all families to come to the celebration of the Mass in full and active participation of the “domestic church” in the larger church community. Therefore, a specific “cry room” is not designated, instead the gathering space allows families to bring children to that area as needed and still be able to remain engaged with the liturgy.

? **Where will Mass be during construction?**

We were blessed by parish leadership’s foresight when the new school was constructed to have a space large enough for Sunday Masses, as well as for other activities in the Parish Center.

? **Why are we using builders, planners, etc. from St. Louis and beyond?**

Why haven’t we used local parishioners and construction companies? The architect and construction manager selected for our project both have extensive knowledge and expertise in large Catholic church design and construction. All construction will be bid to local contractors and suppliers—all labor will come from the local area. Some parishioners have already offered to donate certain elements of the work and we gratefully accept such In-kind donations.

? **Will we continue to use the school for some ministries?**

The only parish ministry we intend to utilize the school for is SRE. The long-term goal is to grow the school enrollment to the point that all classroom spaces in the school will be fully occupied for education programs. The Parish Center will be shared as it is now and will be further developed with a flexible fellowship room.

? **Will Youth Ministry be a priority?**

A dedicated youth room and associated office is included in the design for the basement of the new church. This space is intended to serve as both a leisure/recreation area and a discussion or small study group space. Larger activities would be scheduled in the fellowship room in the Parish Center.

? **Why are we having personal visits for the fundraising strategy?**

Personal visits emphasize the distinctive nature of giving, allow for a thorough presentation of the need, give you the opportunity to ask your own questions, and allow visitors to express their enthusiasm for the project. In addition, personal visits place a greater emphasis on stewardship, allowing campaign volunteers to share their faith experience and trust in God.

? **Why am I asked to consider a specific amount?**

Parishioners need to know what levels of support are necessary to raise \$18.6 million. A gift amount is suggested for you to prayerfully consider because as Christian people we have an opportunity to return to the Lord according to the measure His Goodness has been bestowed upon us. No judgment is made on the level of gift you offer. The important thing is that your gift be prayerfully discerned, proportionate to your means, and reflect a spirit of sacrifice in thanksgiving to God.

? **What if I choose not to give the amount requested?**

We know matters of giving are subject to priorities and your situation is unique unto itself. However, you are asked to prayerfully consider a specific gift. Whatever your response, it should be one of your choosing made in a spirit of sacrifice, and all gifts will be beneficial to the work of spreading the Gospel.

? **If Immaculate Conception has approximately 1,150 registered households and the goal is \$18.6 million, why don't we ask each household to donate the same amount?**

Why are some people asked for a greater amount?

Successful campaigns don't achieve their goals through mathematical calculation. In our parish, like most, 80% of parish support comes from 20% of the parish.

A goal of \$18.6 million cannot be reached without a number of substantial pledges and others at lesser levels. Some parishioners are blessed with ample resources, and others are not. The important thing is that our gift be planned, proportionate to our means, and reflect a spirit of sacrifice in thanksgiving to God.

? **Will my gift remain confidential?**

Yes! The only people who will have knowledge of pledge information are the volunteer and the campaign staff. These individuals have been instructed to keep all donor information confidential.



Immaculate Conception
CATHOLIC CHURCH

208 South Hope Street | Jackson, MO 63755 | icjacksonmo.com